

Editor's Comment

In this edition we'd like to share with you a behind the scenes look at some of the IT that powers what we do, together with an example of our more unusual work, in support of artistic sculpture.

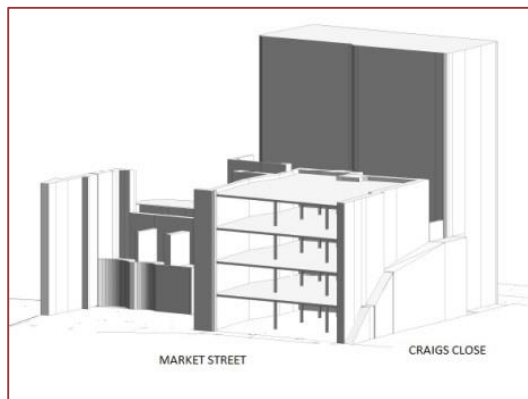
We also report developments in our Management team and pleasing recent completions and new commissions. To check out more on recent completions, new commissions and further news, go to our website:- www.ruddconsult.com

BIM-TASTIC!

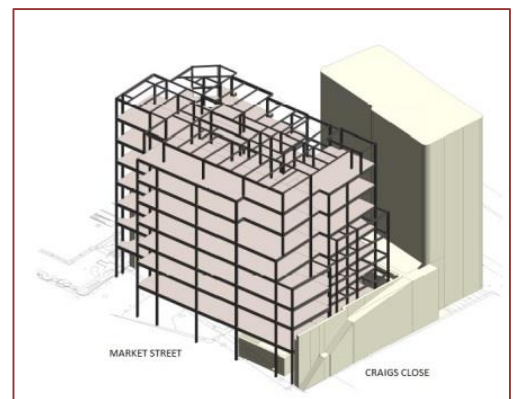
An important part of our services to our Clients is commitment to Building Information Modelling (BIM) and state of the art IT and specialist training of our Technical Staff in order to provide 3D illustration, analysis, modelling and coordination, to efficiently address complex structural and civil briefs.

Market Street Hotel, Edinburgh

We have utilised integrated steel frame design software, coordinated with Revit, to analyse and design a multi-storey framed structure within a complex city centre gap site.



Existing Site Model



Proposed Structural Model

Building Information Modelling (BIM)

We continue to develop our commitment to BIM for all of our Clients, including the ongoing Lothian Bundle Partnerships Centres project for Hubco.

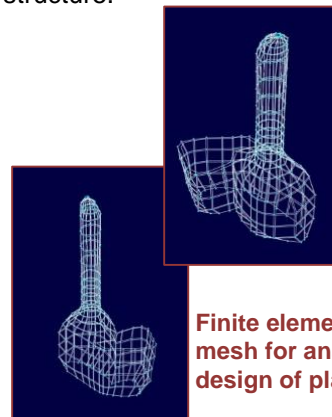
All of our Technicians have Revit Software, and we design and model all new multi-storey structures in 3D Software.

Firhill Partnership Centre, Edinburgh



Trafalgar, but not Square!

We love delivering solutions to unconventional structures and niche design and have recently assisted Powderhall Bronze Foundry in the design and fabrication of an award winning 8m tall bronze sculpture to be mounted on the salubrious 4th plinth in Trafalgar Square, London. We have strived to harness the power of technology to deliver a quite unique structure.



Finite element model mesh for analysis & design of plated bronze



© copyright David Shrigley photograph by James O'Jenkins. Courtesy of Artist and Stephen Friedman Gallery, London.



Gillian Cooke – Promotion to Director at Will Rudd Davidson

Will Rudd Davidson are delighted to confirm that Gill has accepted the position of Director from 1st January 2015. This reflects her hard work and commitment over the past 10 years, and is part of the Company's policy of developing talented members of staff.

She brings a fresh approach, and the Management team looks forward to her increased input as we strive to maintain the high standard of service expected from us, as our workload and staff numbers expand.

Whilst she will no doubt be busy in her new role, we know that she would welcome the opportunity to escape from the office for a coffee or lunch.

Contact: Gillian.cooke@ruddconsult.com



Light Steel Framing Hybrid Rises from the Depths

We are delighted to now see our LSF hot rolled steel Hybrid structure at Mossspark reach first floor level on site. This is by far one of the most complex LSF hot-rolled structures designed and was only achievable with the use of Vertex modelling software. This complex structure showcases the value our collaboration and collective expertise with Macloch and BW Industries brings to projects such as these. To showcase the build process we have a live camera link which can be viewed at:

<http://www.siteeyelive.com/monitor/mossspark/computerc47.jpg>



Examples of Recent Completions

- Thistle Phase II Housing
- Refurbished Fire Tower at McDonald Road Fire Station
- M8 Contraflows at Newhouse – Now Operational
- Sky Skills Centre, Livingston
- Craigievar House, Edinburgh
- New Meerkat Enclosure, Edinburgh Zoo
- Lothian Buses Shop
- City of Edinburgh Methodist Church Refurbishment
- New 50m Wind Turbine, Aberdeen
- Malmaison, Glasgow – Refurbishment
- 133 Finnieston Street, Glasgow – Recladding
- TIC Building – Curtain Walling

Examples of Ongoing Commissions/ Projects on Site:

- National Museum of Flight Redevelopment, East Fortune
- Fettes North, New Teaching Facility, Fettes College
- New Offshore Training Facility, Halliburton, Aberdeen
- Student Residencies, Elliott House, Edinburgh
- Royal Exchange Square, Glasgow
- Visitors' Reception, Ardbeg Distillery, Islay
- New Hotel, 44 York Place, Edinburgh
- New Hotel, Market Street, Edinburgh
- North Lanarkshire Schools – New Build Framework
- Three Partnership Centres "Lothian Bundle"
- Upper Junior School, Erskine Stewarts Melville College
- West Register Street, Edinburgh – Demolition, Façade Retention and New Build of Nine Storey Office Block
- Lanark Road West, Curriehill – New Housing
- Longstone, Saughton Road – New Housing
- Urban Oasis, Lochend, Edinburgh – New Housing
- M8/M73/M74 Improvement Works
- Space Optimisation at Heriot Watt University

